

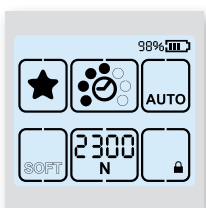
## STB 71 / STB 73 / STB 75

### TECHNICAL DATA SHEET

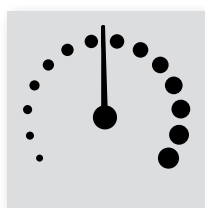
Hand Tool for Plastic Strapping



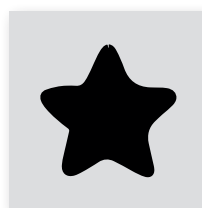
### FEATURES



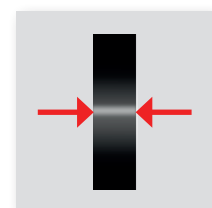
- **Full touch user interface** for easiest adjustment of parameters and tool status information for operator



- **Variable tension speed** controlled by finger pressure for sensitive packages



- **Favorite strapping function** for quick one touch switch of tool settings for varying packages



- **Strap alignment indication** to ensure that strap is inserted correctly for higher process security



TECHNICAL DATA



Strapping tool	STB 71	STB 73	STB 75
Operation mode	auto / semi / manual	auto / semi / manual	auto / semi / manual
Tension force range	Standard Soft		
	400–1200 N (90–270 lbf) 150–750 N (22–165 lbf)	900–2500 N (200–560 lbf) 400–1360 N (90–305 lbf)	1300–4500 N (290–1000 lbf) 400–1600 N (90–340 lbf)
Variable tension speed range	0–290 mm/s (11.3 in/s)	0–220 mm/s (8.6 in/s)	0–120 mm/s (4.7 in/s)
Weight (incl. battery)	3.6 kg (7.9 lb)	3.8 kg (8.4 lb)	4.3 kg (9.5 lb)
Dimension (L x W x H)	370 x 141 x 135 mm 14.5" x 5.5" x 5.3"	370 x 141 x 135 mm 14.5" x 5.5" x 5.3"	370 x 143 x 135 mm 14.5" x 5.6" x 5.3"
Working temperature	-10 °C to +40 °C (14–104 °F)	-10°C to +40°C (14–104 °F)	-10°C to +40°C (14–104 °F)
Relative humidity	up to 90%	up to 90%	up to 90%
<b>Battery / charger</b>			
Charger type	Bosch	Bosch	Bosch
Battery charger voltage	100 or 110 or 230 V	100 or 110 or 230 V	100 or 110 or 230 V
Charging time	15–30 min	15–30 min	25–35 min
Battery type	Bosch Li-Ion 18V, 2.0Ah	Bosch Li-Ion 18V, 2.0Ah	Bosch Li-Ion 18V, 4.0 Ah
Cycles per battery charge			
· Low tension	800	800	800
· Medium tension	600	400	500
· High tension	400	200	300
<b>Strap</b>			
Strap	PET (Polyester) PP (Polypropylene)	PET (Polyester) PP (Polypropylene)	PET (Polyester) PP (Polypropylene)
Width	9–10, 12–13 mm (3/8", 1/2")	12–13, 15–16 mm (1/2", 5/8")	15–16, 18–19 mm (5/8", 3/4")
Thickness	PET 0.4–0.8 mm (.015"–.031") PP 0.5–0.8 mm (.019"–.031")	0.5–1.0 mm (.019"–.040")	0.8–1.3 mm (.031"–.051")
<b>Features</b>			
Real time indication of applied tension force	●	●	●
Variable tension speed	●	●	●
Favorite strapping function	●	●	●
Display color indication for tool status information	●	●	●
Strap alignment indication	●	●	●
Strap dust blow out vent	●	●	●
Battery protection	●	●	●
0–Tension welding	●	●	●

ACCESSORIES



■ **User interface cover**  
for additional protection in harshest environment



■ **Protection plate**  
for usage on abrasive surfaces



■ **Suspension bow**  
for stationary application

